

Griechische Zeichnung 475 v. Chr.



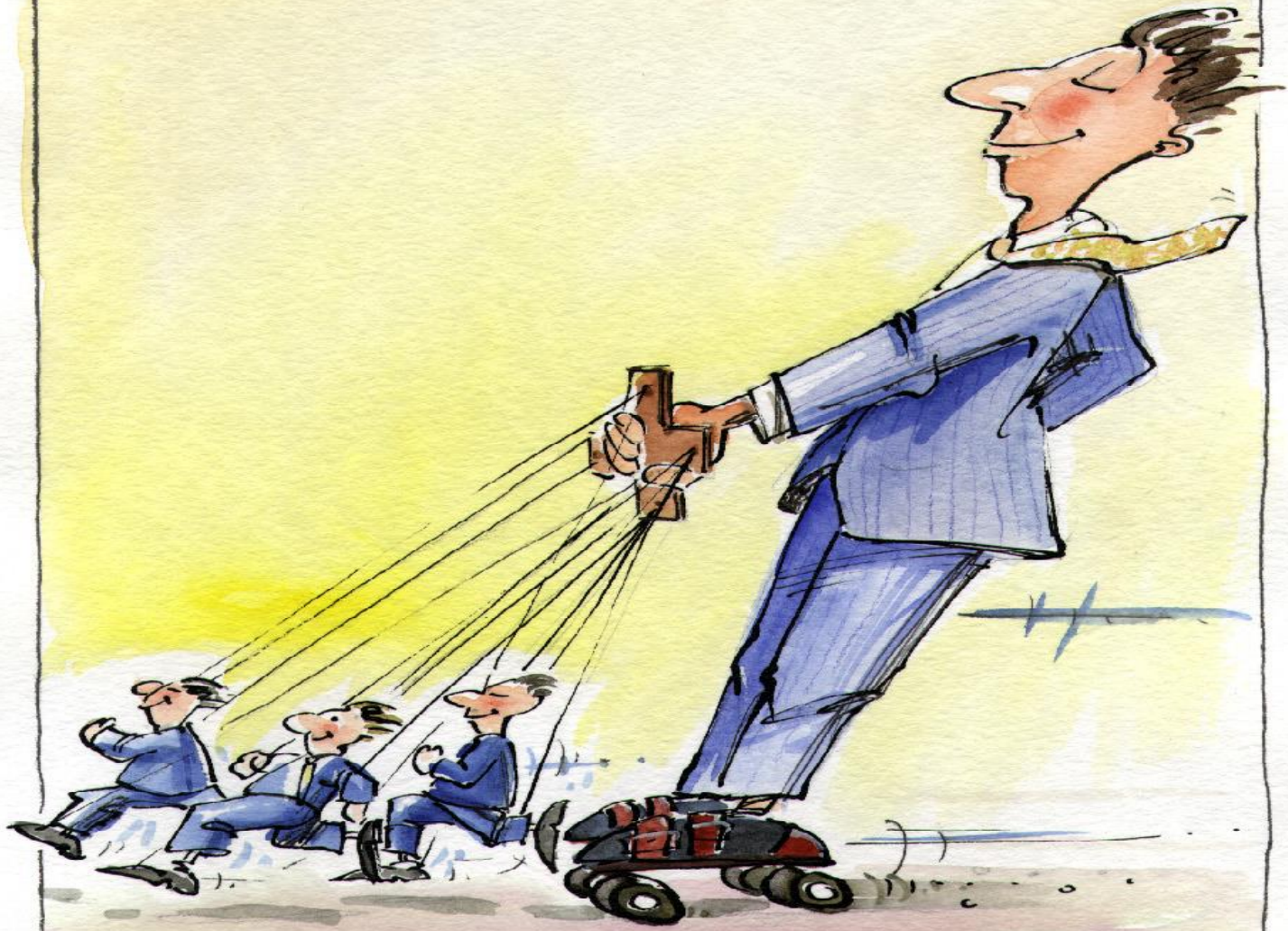
Symposion (griech.): *Saufgelage*

„Führen oder Managen?“

Das ist hier die Frage

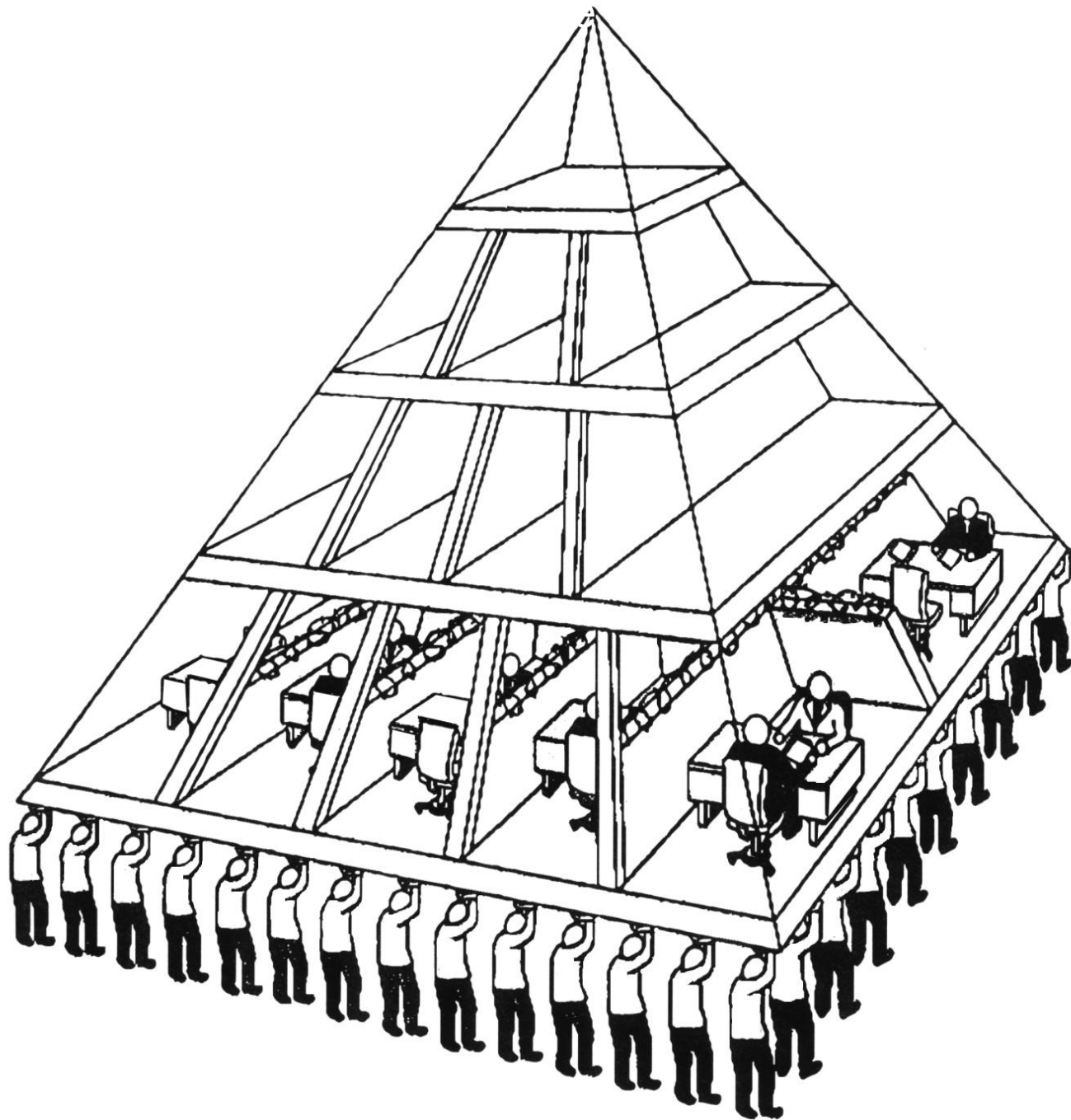


Jürgen Fuchs



SCHWARZ

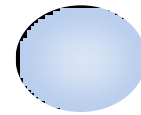


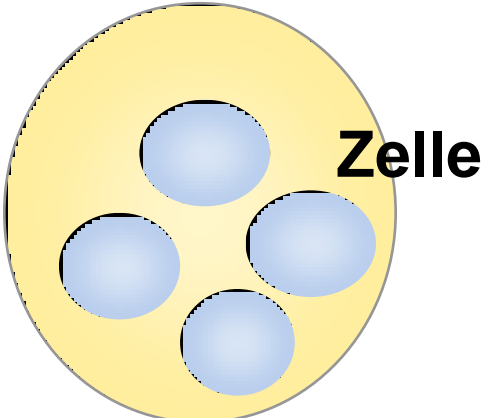


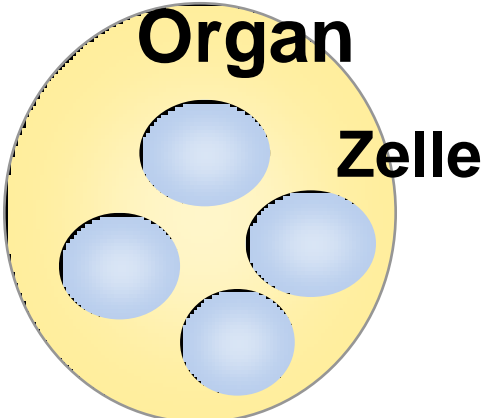
**Gemeinsam
erfolgreich sein**

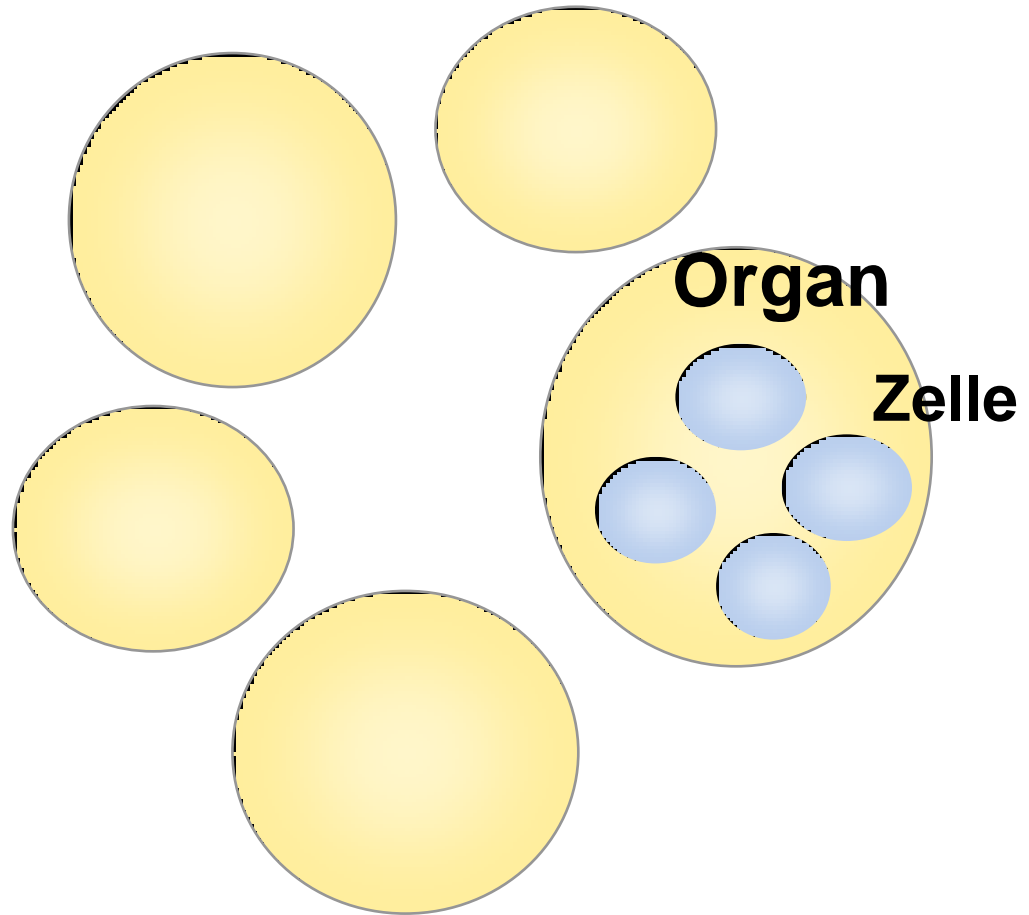


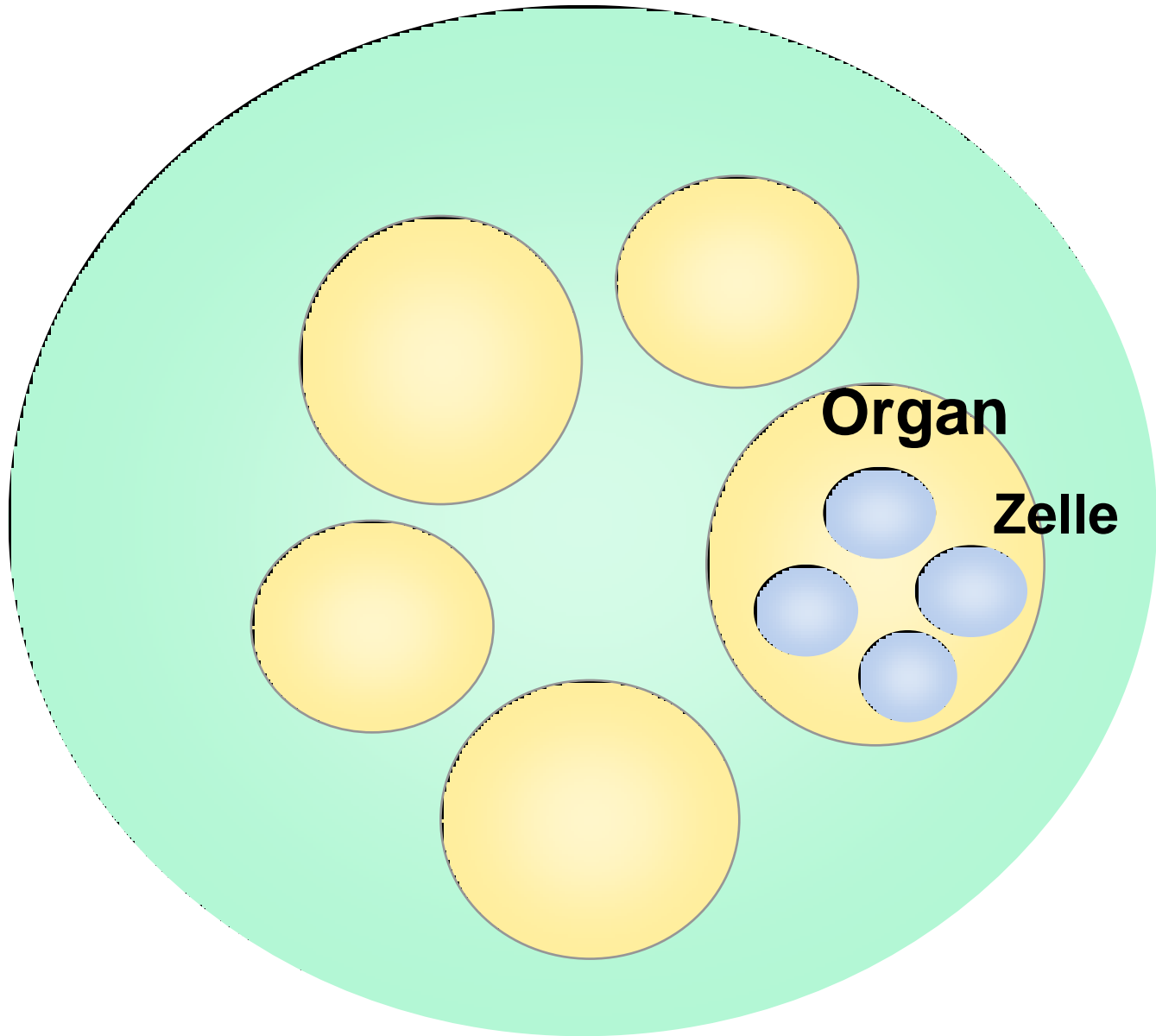
Zelle



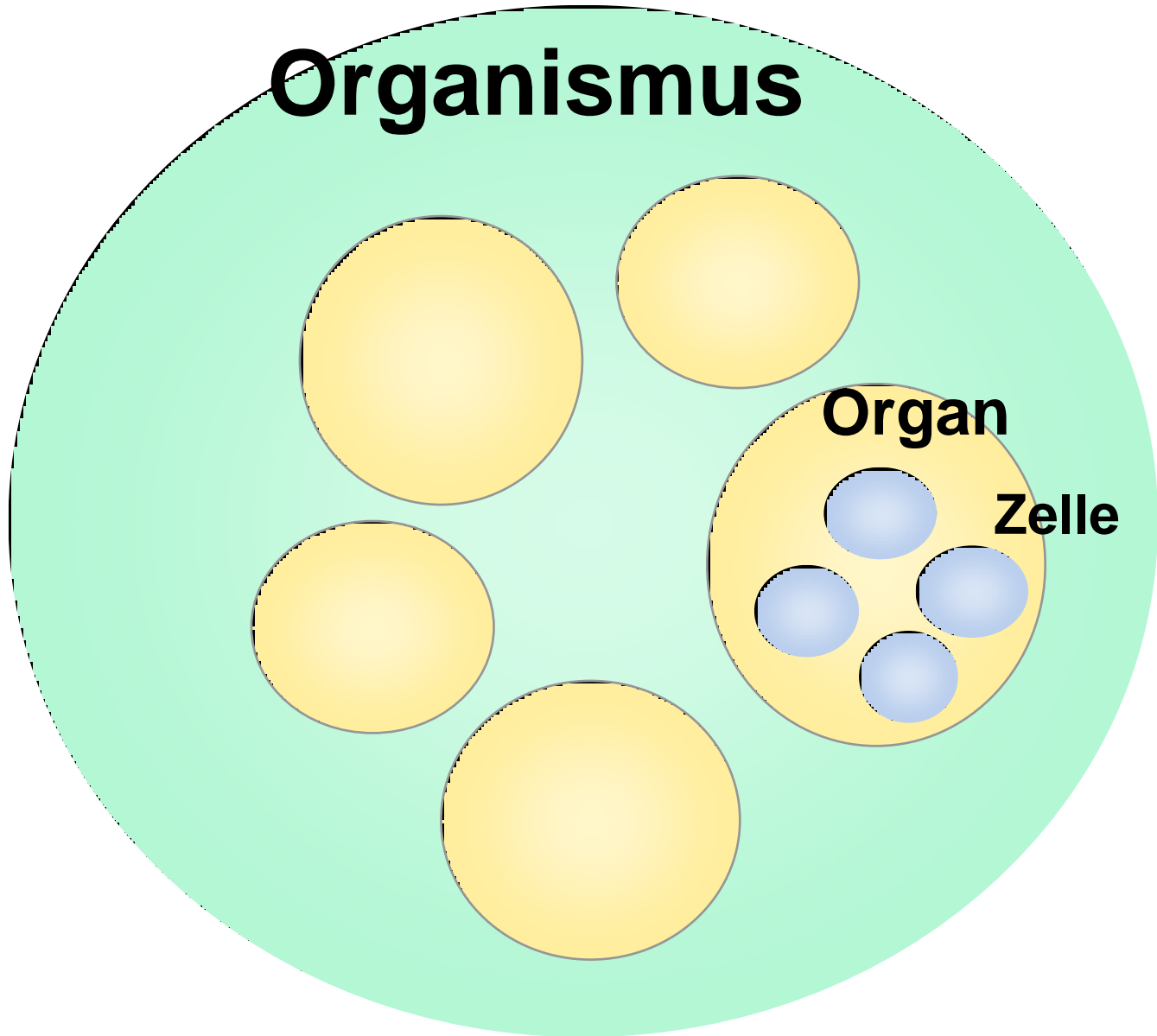






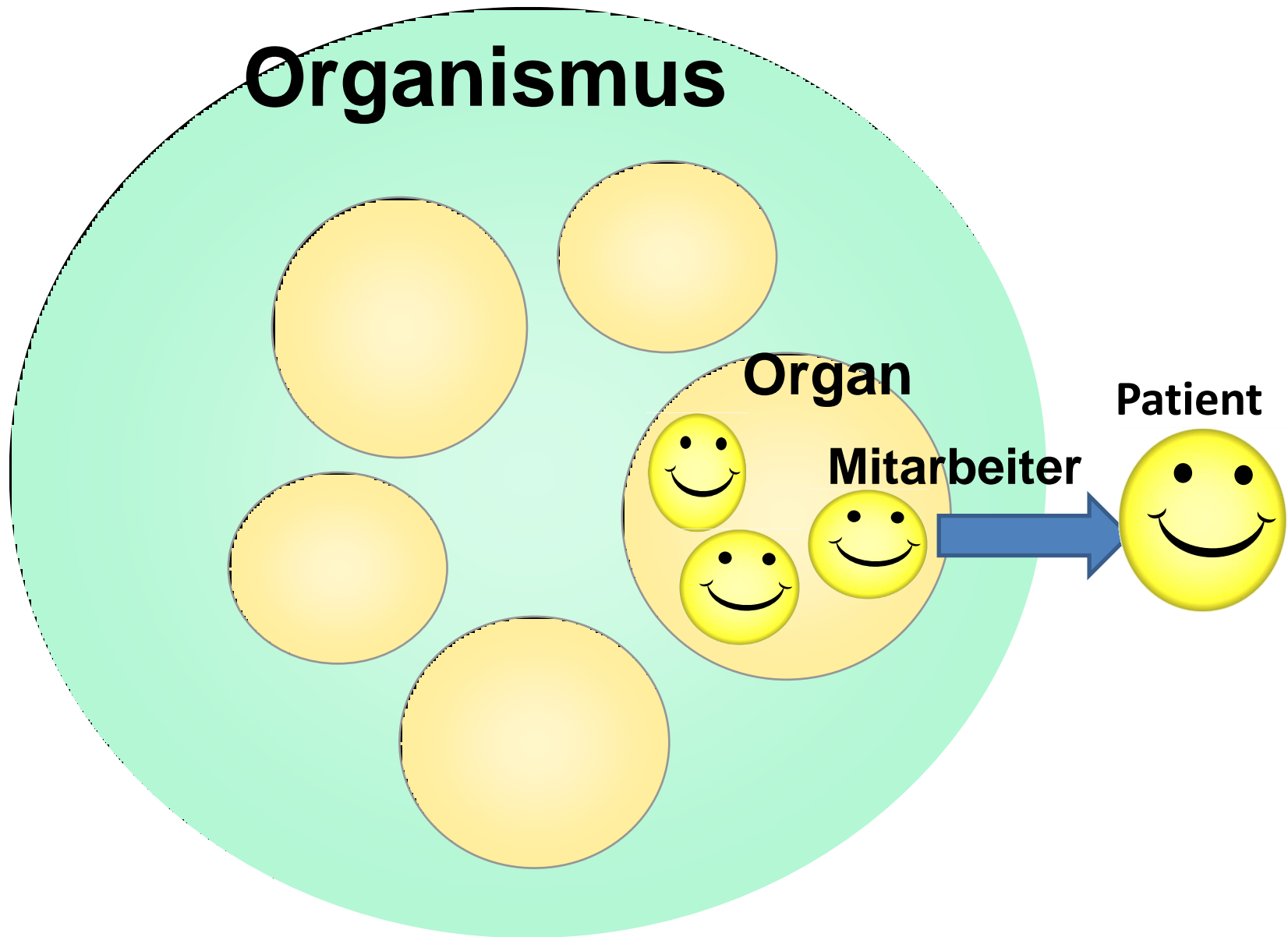


Organismus

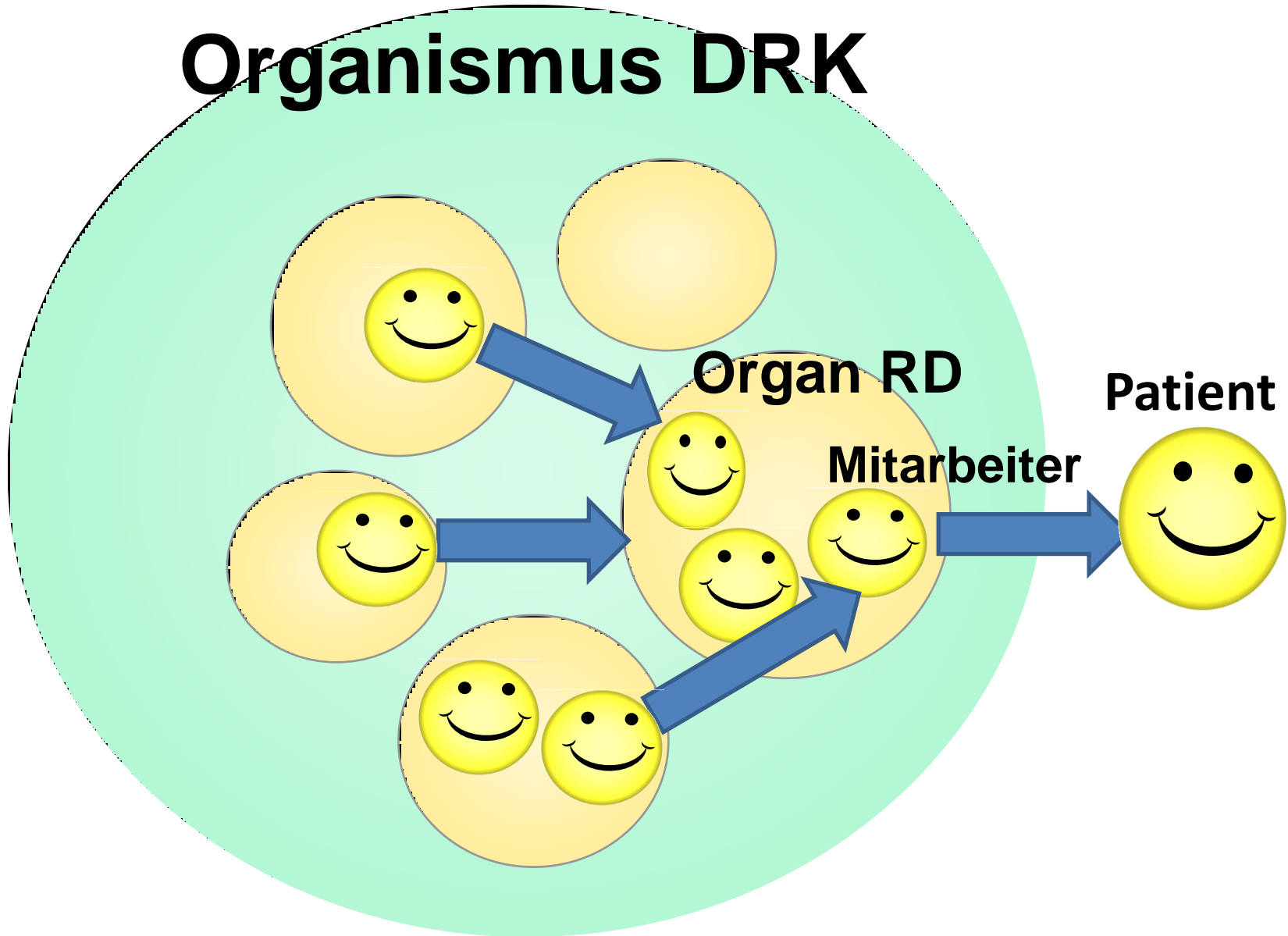


Organ

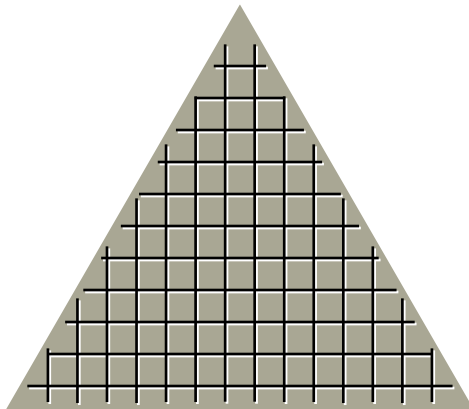
Zelle



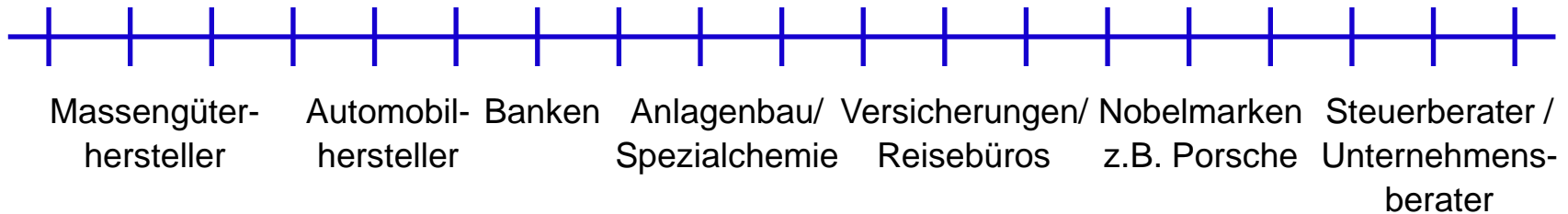
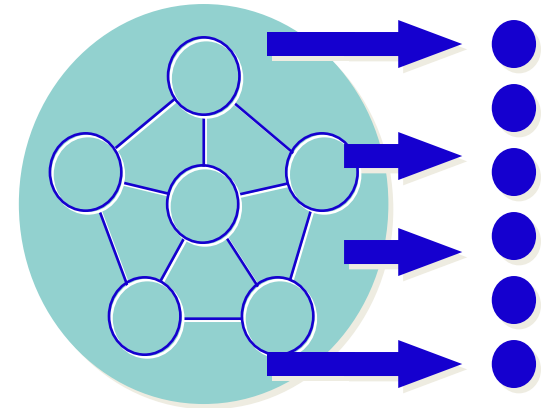
Organismus DRK



Mensch als „Mittel.“

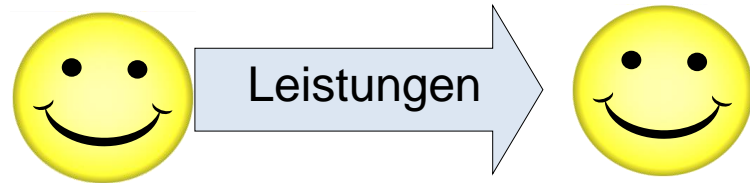


Mensch als „Mittelpunkt“

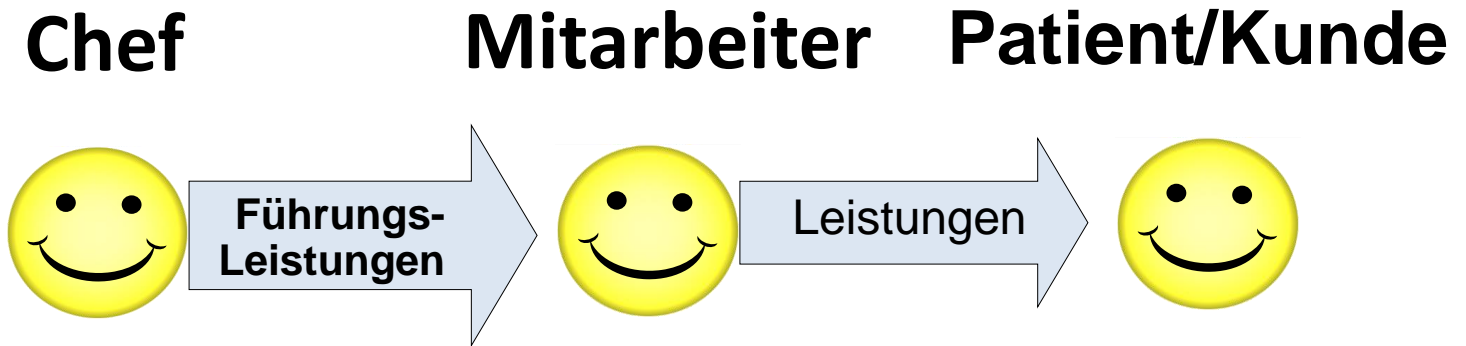


Das Erfolgsprinzip „auf Augenhöhe“

Mitarbeiter Patient/Kunde

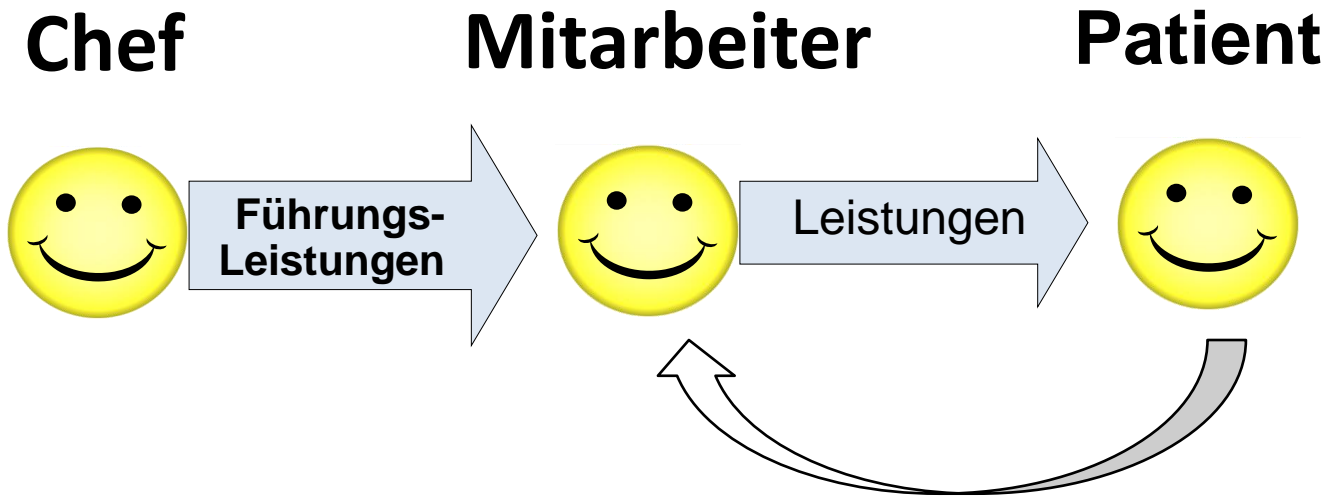


Das Erfolgsprinzip „auf Augenhöhe“



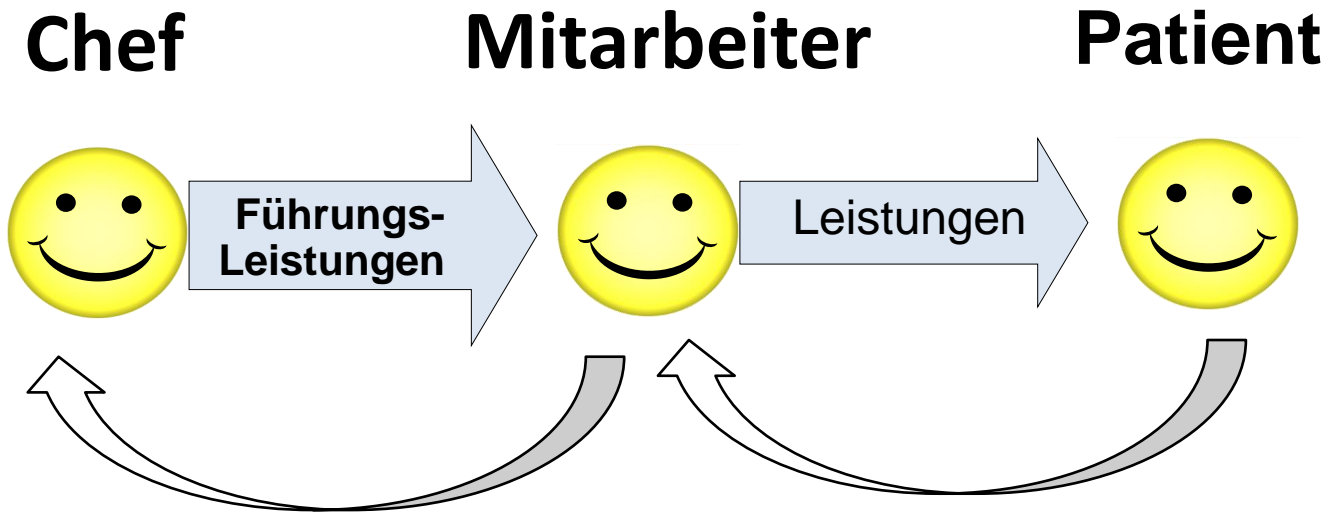
Das Erfolgsprinzip „auf Augenhöhe“

Wer bezahlt hier eigentlich wen?



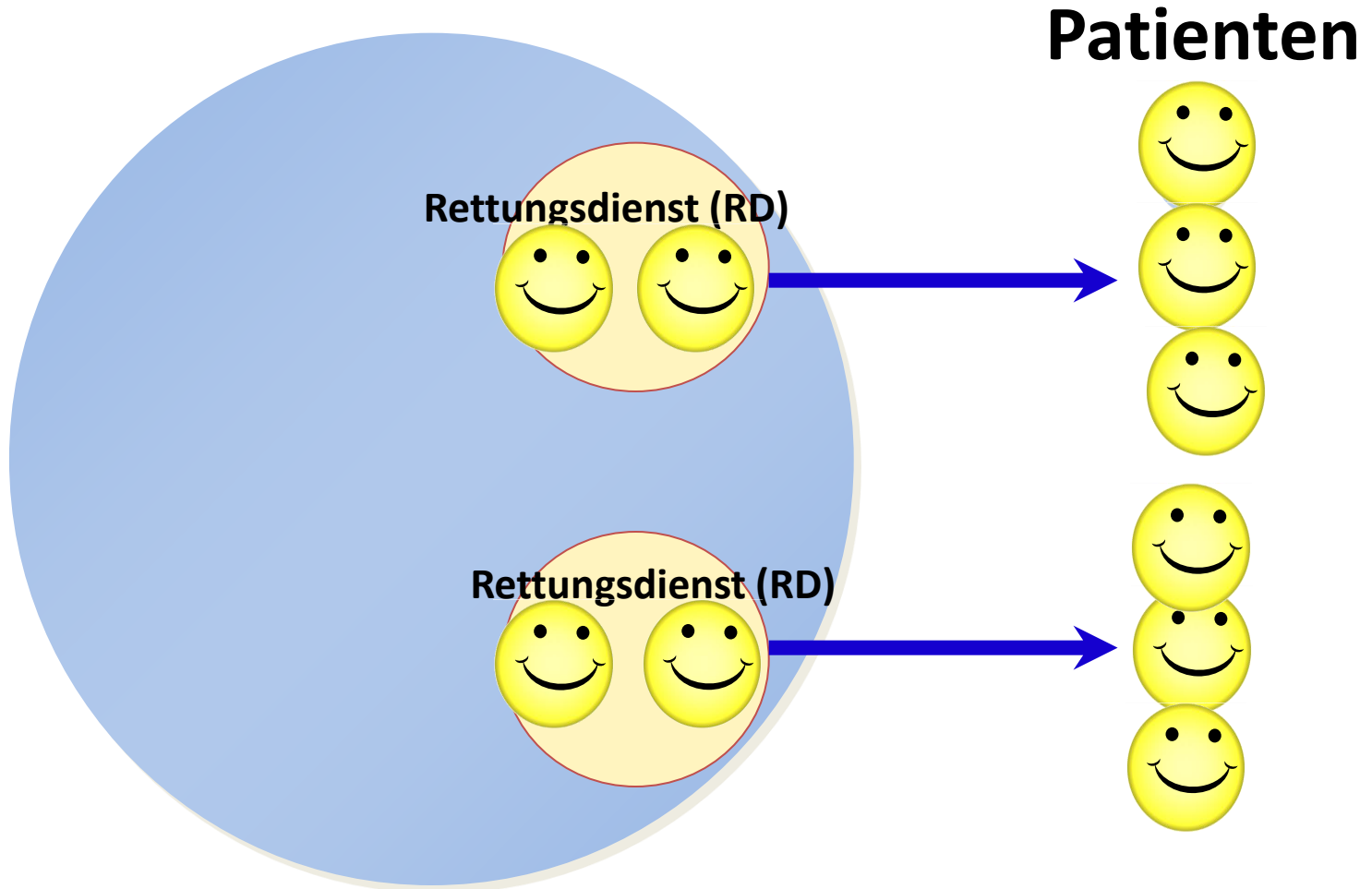
Das Erfolgsprinzip „auf Augenhöhe“

Wer bezahlt hier eigentlich wen?



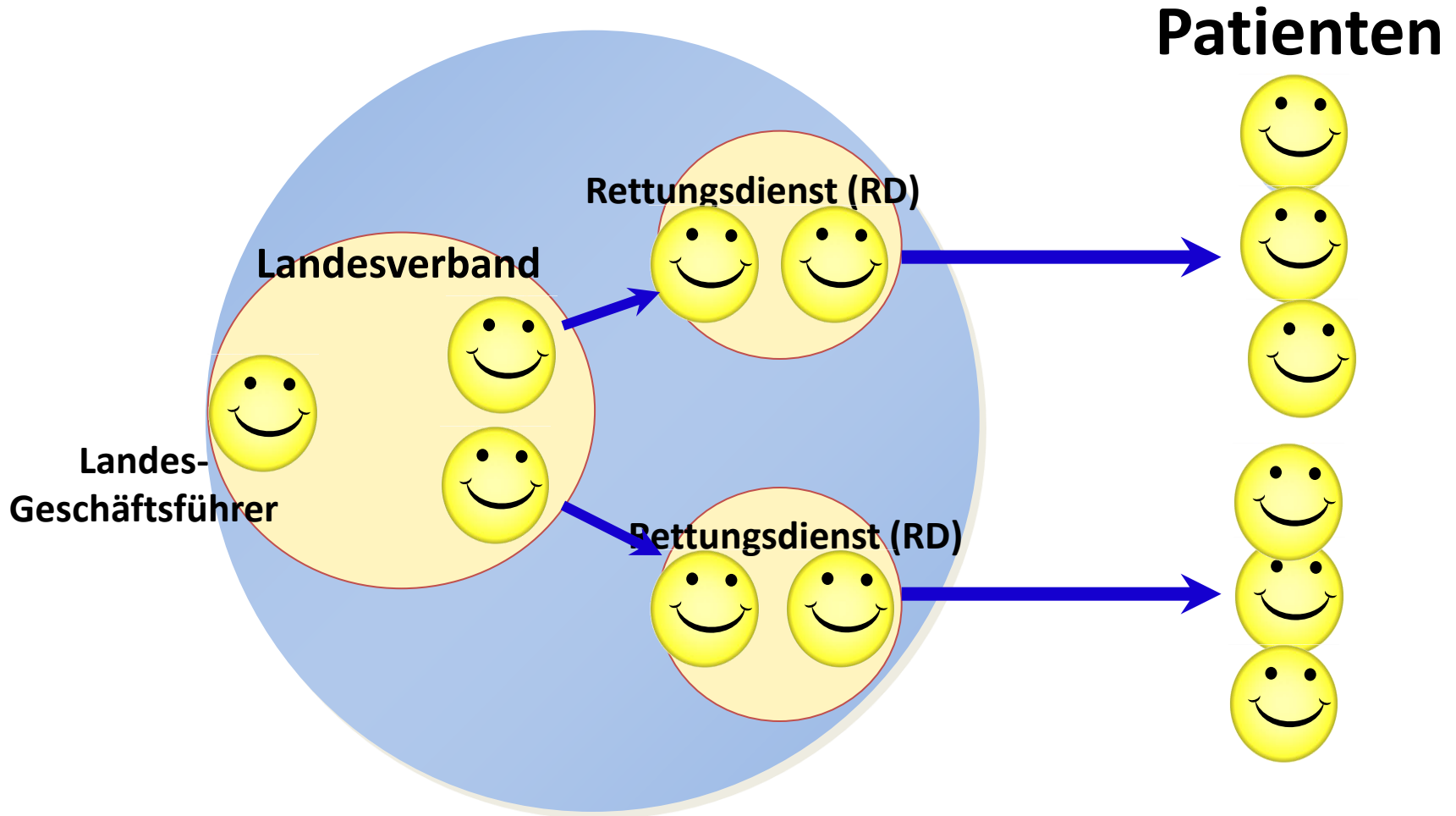
Leistungs-Landkarte des DRK

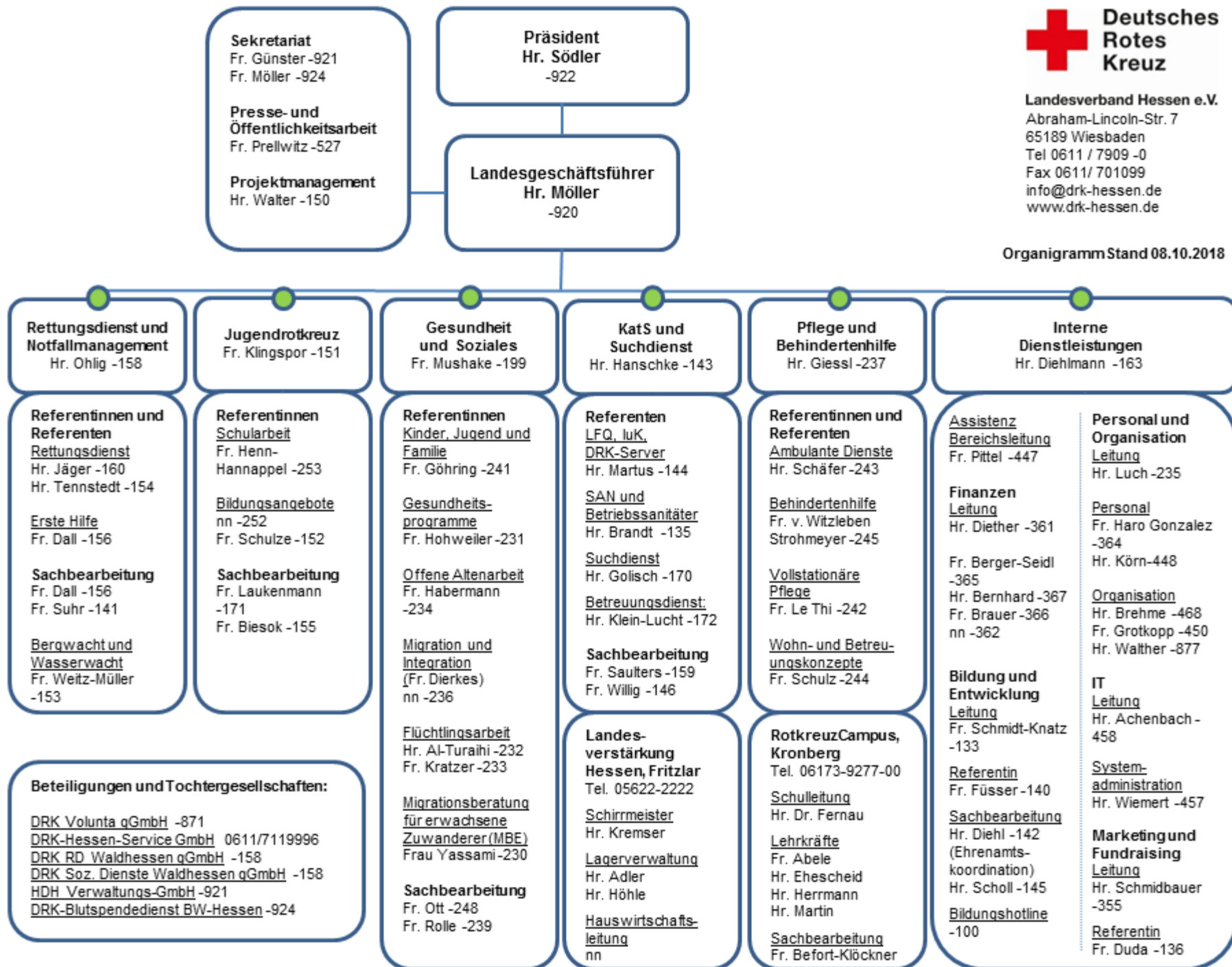
Das Bild zeigt:
„Wer leistet was für wen?“

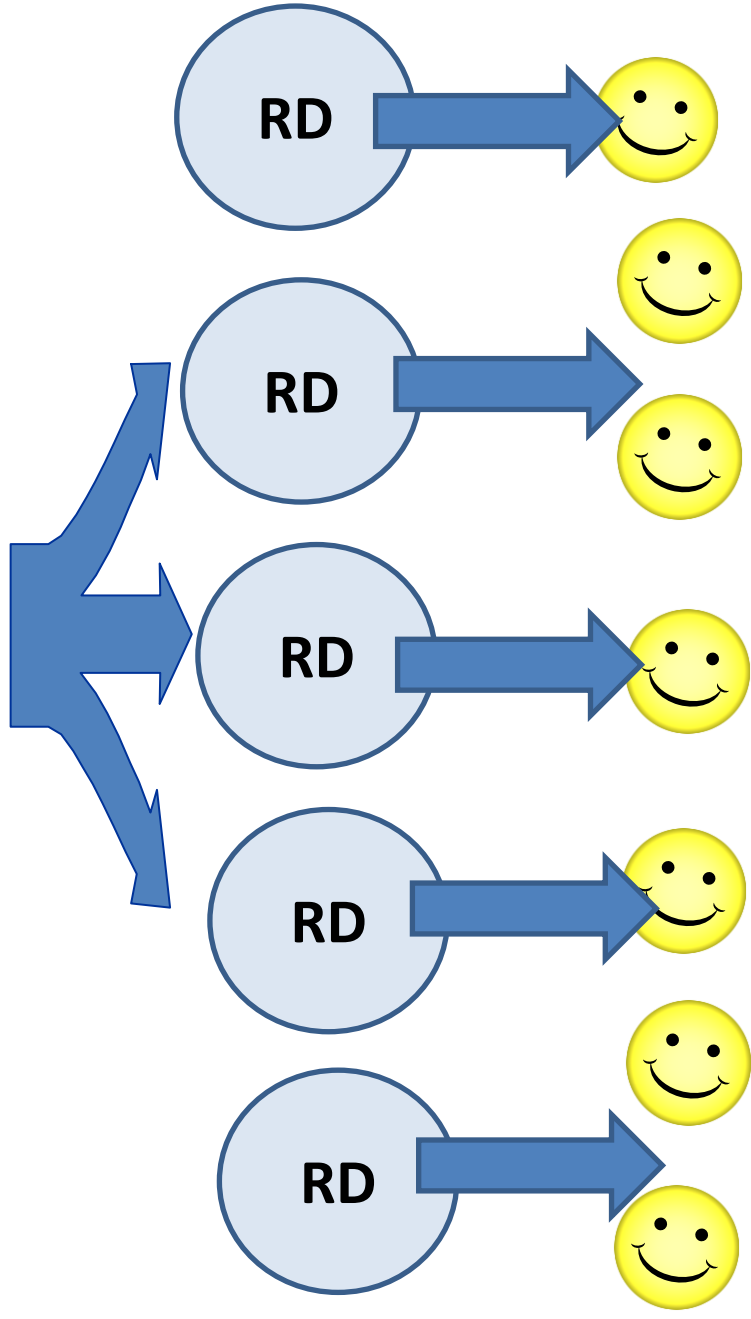
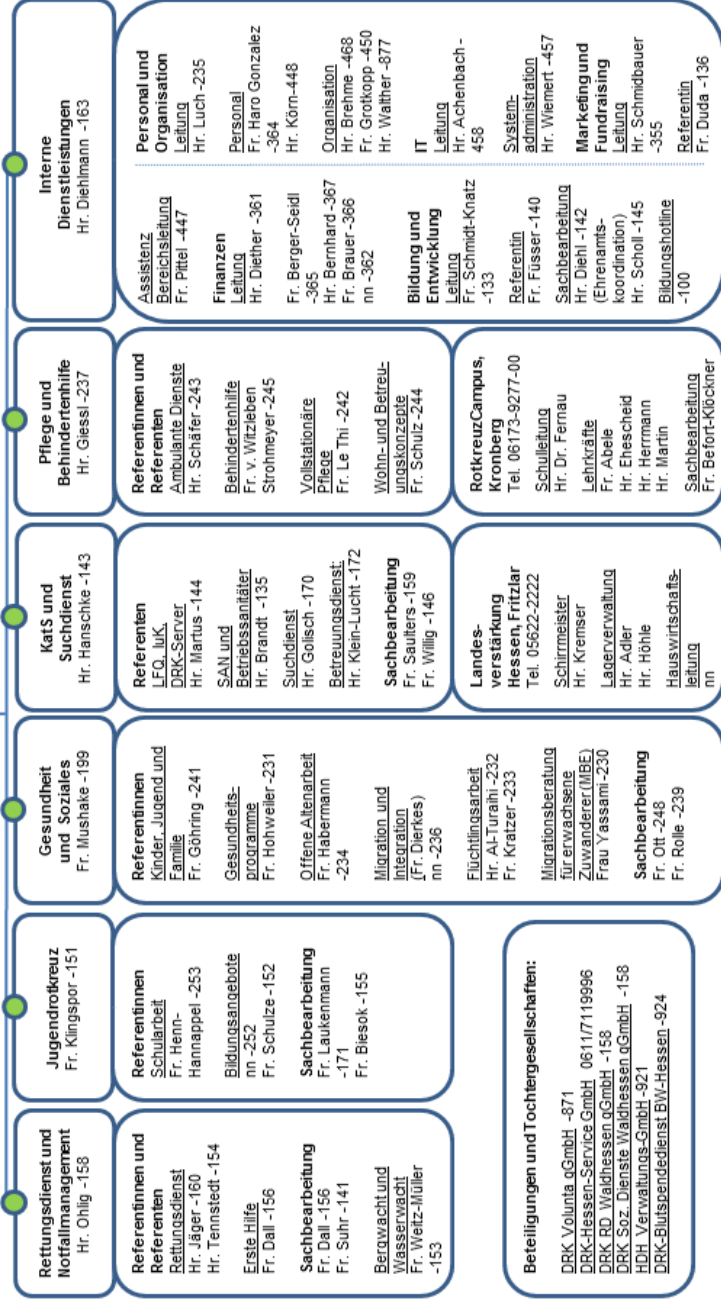
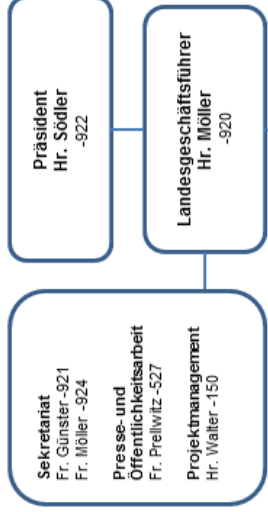


Leistungs-Landkarte des DRK

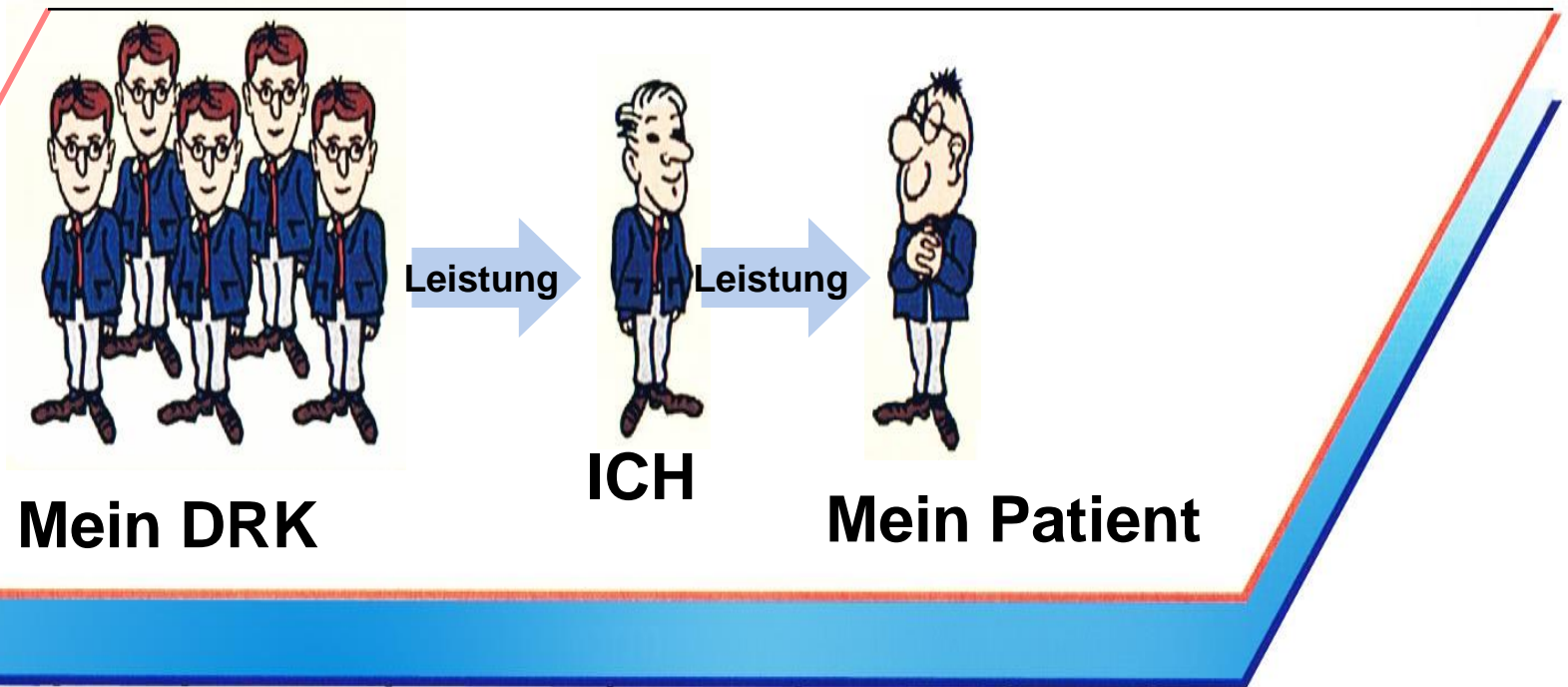
Das Bild zeigt:
„Wer leistet was für wen?“







Das Erfolgsprinzip: „Auf Augenhöhe“

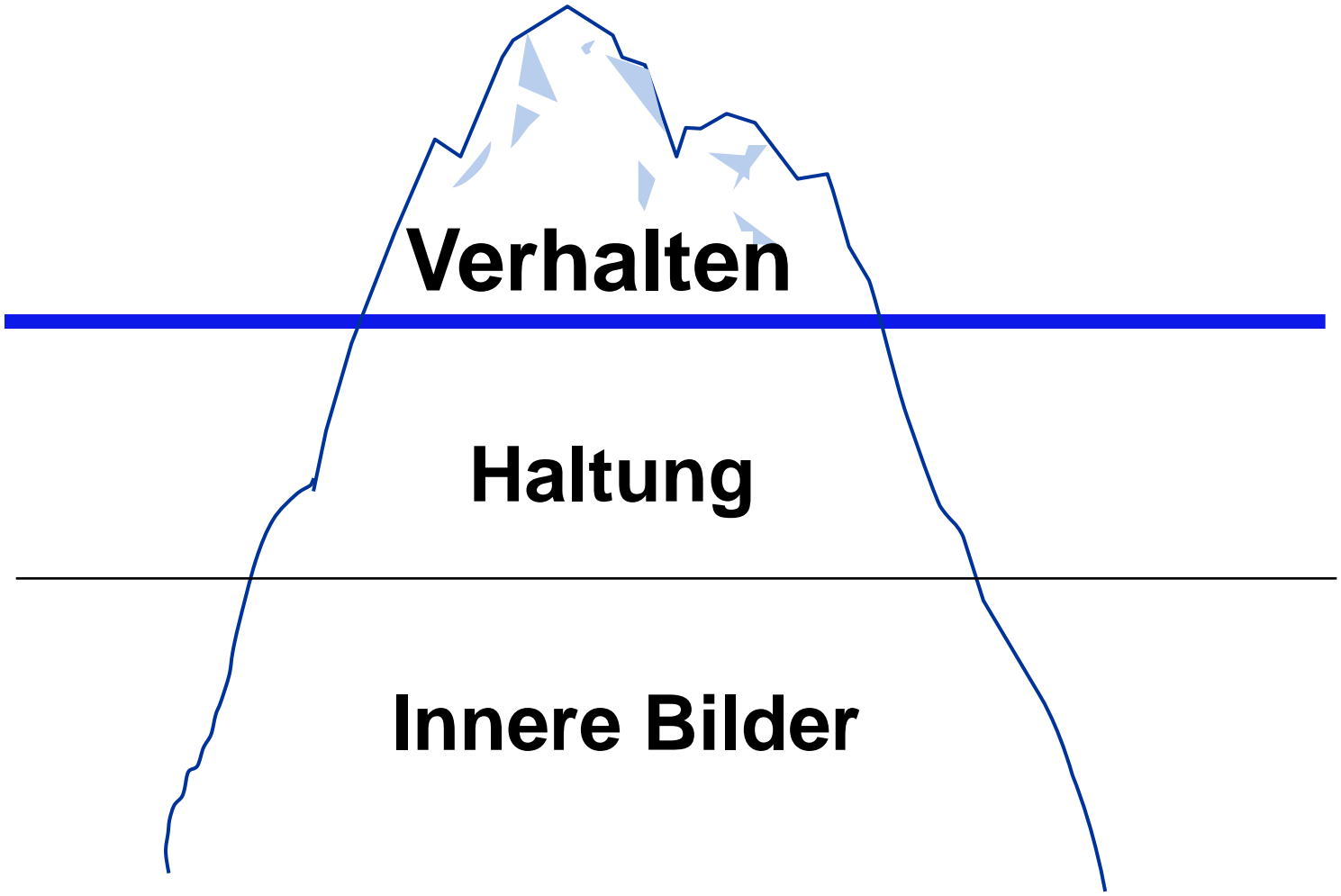


Der Eisberg
des Verhaltens:
Mit 2 Alternativen



Verhalten

The image features a blue line drawing of an iceberg. The visible tip of the iceberg is above a thick blue horizontal line, while the much larger submerged part is below a thin black horizontal line. The word "Verhalten" is written in bold black text on the visible tip. The background is white.



Verhalten

Haltung

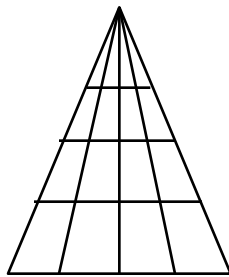
Innere Bilder



Verhalten

Haltung

Innere Bilder



Pyramide



The diagram features an iceberg with a blue outline and a light blue shaded top. A thick blue horizontal line is drawn across the middle of the iceberg, separating the visible tip from the submerged part. A thin black horizontal line is drawn below the submerged part. The word 'Verhalten' is written in bold black text on the tip of the iceberg. The word 'Haltung' is written in bold black text in the submerged part of the iceberg. The word 'Innere Bilder' is written in bold black text further down in the submerged part. To the left of the submerged part, there are two yellow smiley face emojis, the text '„Oben und Unten“', and a pyramid diagram. The word 'Pyramide' is written in blue text below the pyramid.

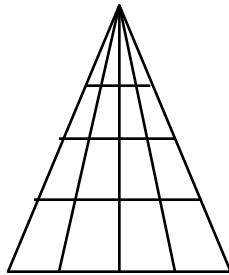
Verhalten



„Oben
und
Unten“



Haltung



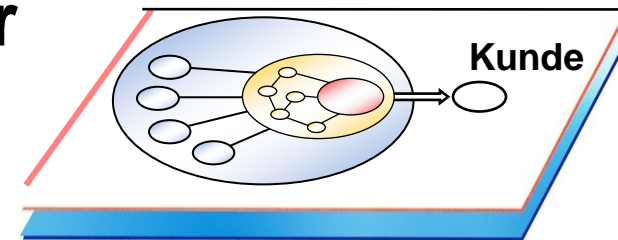
Innere Bilder

Pyramide

Verhalten

Haltung

Innere Bilder

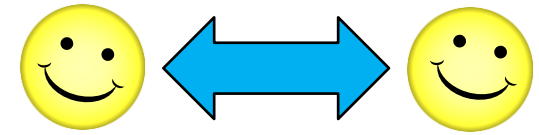


Organismus

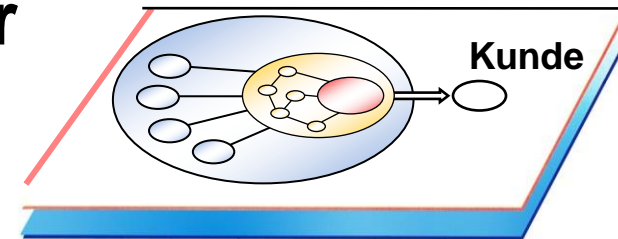
Verhalten

Haltung

Innere Bilder



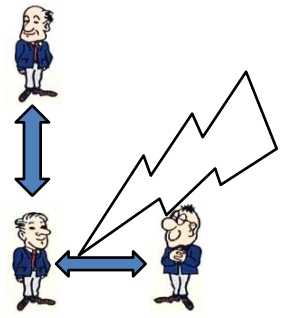
„Gleiche Augenhöhe“



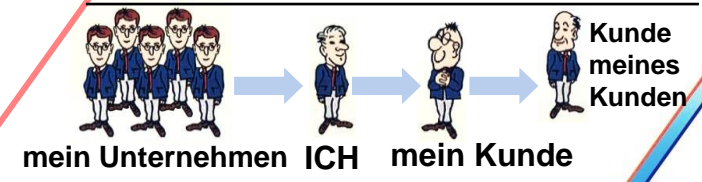
Organismus

Wir haben die Wahl:
Vertikale Pyramide oder Horizontaler Organismus

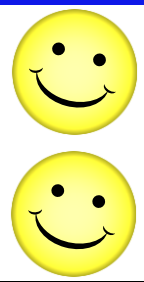
mein Chef



ICH mein Kunde

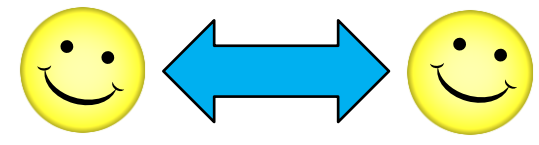


Verhalten



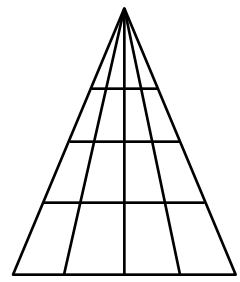
„Oben und Unten“

Haltung

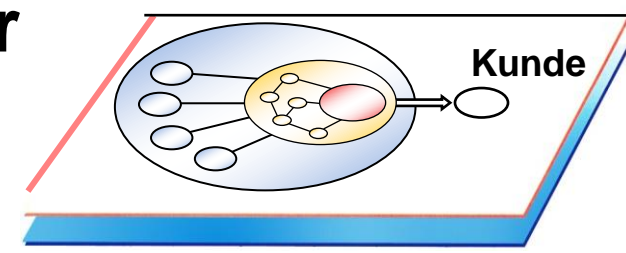


„Gleiche Augenhöhe“

Innere Bilder



Pyramide



Organismus

Leistungs-Landkarte der „SAP SE“

Entwurf 25.03.2015

